



High Point, North Hill, Highgate Village, N6

£325,000 Leasehold



44 highgate high street, highgate village, london, n6 5hx
 telephone 020 8348 8000 facsimile 020 8348 8232
 email highgate@litchfields.com litchfields.com
 offices also in hampstead garden suburb & crouch end

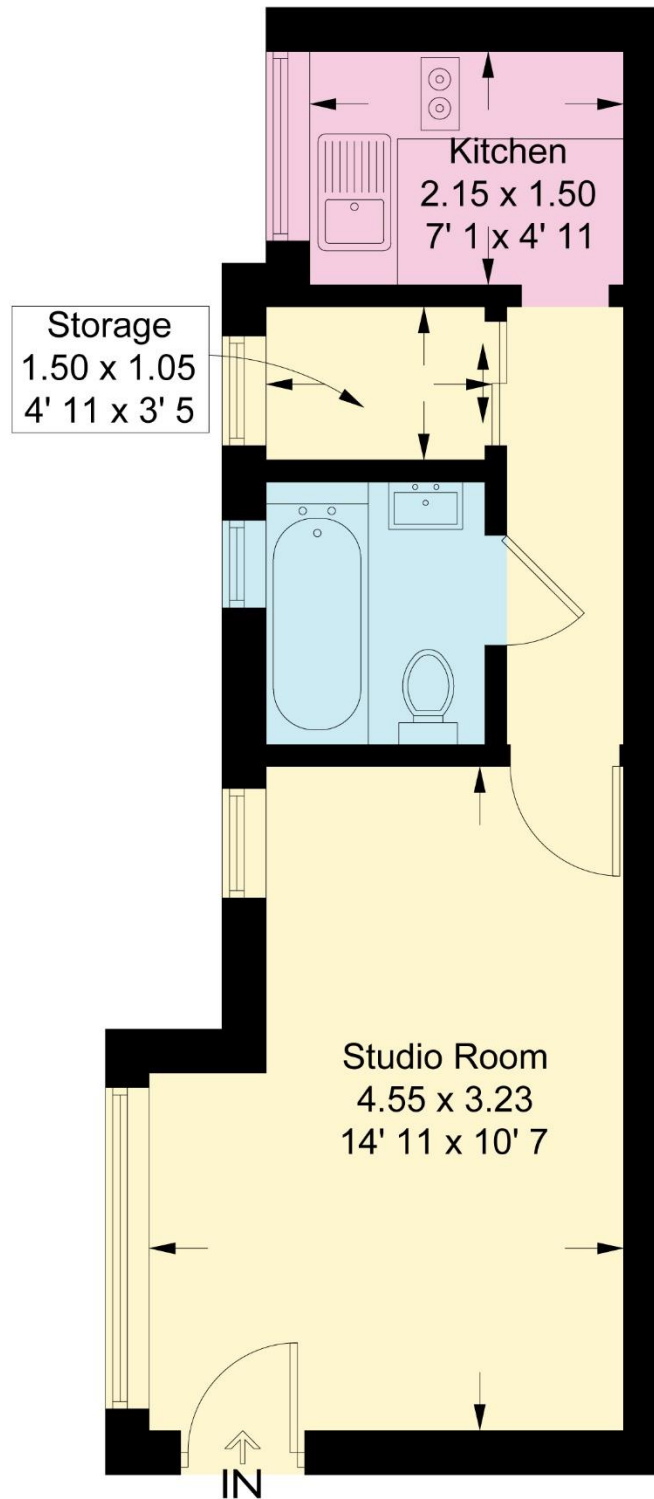
We are pleased to offer this raised ground floor studio apartment within a landmark grade II listed purpose built block designed by the renowned modernist architect Berthold Lubetkin. These flats rarely come on the market and feature a bright studio room, separate kitchen & bathroom. Owners can enjoy all the benefits and facilities of this superb block including a resident building manager, concierge service, extensive landscaped gardens, heated outdoor swimming pool, 2 all weather tennis courts and a communal roof terrace with breathtaking views across London. Highpoint is very conveniently located a few hundred yards away from all the amenities of Highgate Village & is within a quarter of a mile of Highgate tube & Woods with Waterlow Park, Kenwood & the Heath also on the doorstep. Offered for sale chain free.



**Very well maintained Grade II listed apartment block
Raised ground floor studio flat
Studio room
Kitchen
Bathroom
Resident building manager
Concierge service
Beautiful landscaped communal gardens
Heated outdoor swimming pool
2 all weather tennis courts
Communal roof terrace with stunning City views
Chain Free
Close to Village, tube, Woods, Kenwood & Hampstead Heath**

High Point

Approximate Gross Internal Area = 266 sq ft / 24.7 sq m



Raised Ground Floor

This plan is not to scale and must be used as layout guidance only. All measurements and areas are approximate and should not be relied upon to provide accurate information. This plan must not be relied upon when making property valuations, design considerations or any other such relevant decisions. We accept no responsibility or liability (whether in contract, tort or otherwise) in relation to any loss whatsoever arising from or in connection with any use of this plan or the adequacy, accuracy or completeness of it or any information within it.